

## Sponsors

Sponsors — directly and through partners



FECT has been supported by the UNDP, IDRC, ICTP, IMD, APN, IMD, APCC, Lamont Doherty Earth Observatory, Beijing Climate Centre, National Science Foundation - Sri Lanka.

## Our Staff

Prabodha Agalawatte	:: Intermediate Research Scientist
Ruchira Lokuhetti	:: Junior Research Scientist
Janan Visvanathan	:: System Administrator & IT Manager
Shashini Ratnayake	:: Trainee Junior Research Scientist
K.Shobana	:: Trainee Administrative Assistant
Ananda Weerasinghe	:: Senior Research Scientist
P. Wickramagama	:: Senior Research Scientist
P.H.D. Kusumawathie	:: Senior Research Scientist
Rimza Zacky	:: Accountant
Lareef Zubair	:: Principal Scientist
Zeenas Yahiya	:: Social Research Scientist & Projects Manager

## Advisors

Michael Bell	:: Climate Informatics
Ajith Gunaratne	:: Applied Mathematics
D.H.S Maithripala	:: Computational Mathematics
H.Manthirithilake	:: Water Resource Engineering
Mizna Mohamed	:: Environmental Management
Nalin Wickramanayake	:: Coastal and Water Resources
Neil Devadasan	:: Systems Engineer
M. Rasheed	:: Water Resources
Sarith Mahanama	:: Hydro-meteorologist
Vidhura Ralapanawe	:: Information Technology
Zahid	:: Climate Science

## Adjunct Scholars

Ranmalee Bandara	:: Land Surface Modeling
Sewwandhi Chandrasekera	:: Agriculture and Water Resources
Sanjaya Ratnayake	:: Information Technology

## About FECT

### Vision

To sustain as a think-tank and center of excellence in climate, environmental and information technologies and related areas with quality research to support sustainable development and advancement of technological capacity for societal welfare.

### Our Contribution

We have :

- ◆ Undertaken Climate & Environmental research
- ◆ Implemented climate adaptation projects
- ◆ Developed infrastructure for research
- ◆ Trained over two score of personnel since 1997.

To sustain these advances we instituted the Foundation for Environment, Climate and Technology (FECT) as a non-profit company in 2003. FECT contributes to climate, hydrology, adaptation, information technology, social-sciences and engineering for sustainable development. Our charter requires us to work towards societal welfare without private profit.

### Institutional Profile

<b>Company Name:</b>	Foundation for Environment, Climate and Technology
<b>Registration No:</b>	N(A)1148 & GA 56 (from 2008)
<b>Date of Incorporation:</b>	31 <sup>st</sup> December, 2003
<b>Company Secretary:</b>	Ralapanawe Associates
<b>Auditor:</b>	Anzari & Company
<b>Bankers:</b>	Peoples Bank & Hatton National

### Web and Social Media

**Websites:** <http://www.climate.lk>  
<http://www.tropicalclimate.org>



**Facebook:** <http://facebook.com/fectsl>  
**Twitter:** <http://twitter.com/fectlk>

### Contacts

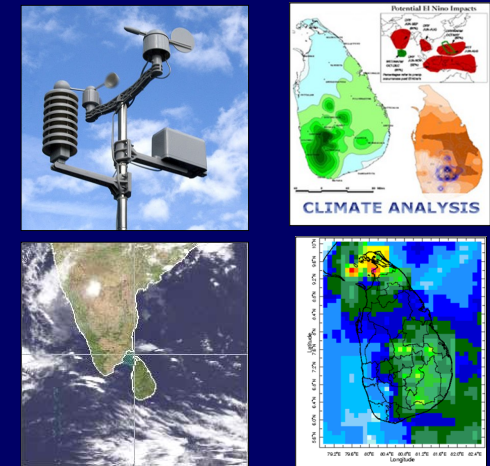
Foundation for Environment Climate & Technology,  
C/o Mahaweli Authority- H.A.O & M Division,  
Digana Village, Rajawella, 20180, Sri Lanka.  
Phone: +94-81-2376746, +94-81-4922992  
E-mail: [info@tropicalclimate.org](mailto:info@tropicalclimate.org) & [fectsl@gmail.com](mailto:fectsl@gmail.com)  
Satellite Office: 76/2 Matala Road, Akurana, Sri Lanka

## Foundation for Environment Climate and Technology

### Climate Adaptation & Environment



### Climate Services



### Education & Training



**For the Application of Science  
for Societal Welfare and  
Environmental Sustainability**

## Ongoing Projects

### Can drought, flood and landslide hazard be skillfully assessed at fine spatial resolution from model predicted data in Sri Lanka and Maldives? (2015–18)

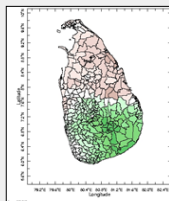


Develop a hazard analysis framework combining multiple indicators to estimate the probability of drought and floods. This work builds on hazards, climate and land surface modeling, and disasters. Sponsored by the

US National Academy of Sciences, USAID.

### Drought Monitoring and Climate Change Assessment for Sri Lanka and Maldives. (2014–17)

Develop tools to monitor Drought Risk and address the shortcomings in climate change projections at moderate time scales ( up to 20 years) for the South-Asian region in collaboration with the Maldives National University Sponsored by the US National Academy of Sciences, USAID.



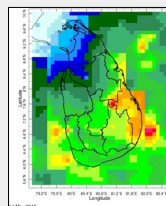
### Remote Sensing of Atmospheric Waves and Instabilities (RAWI) (2014–17)

To study the ocean-atmosphere linkages over the tropical Indian Ocean region at sub-seasonal scale. The project involves upper-air wind instrumentation in Seychelles, Sri Lanka and Singapore, diagnostic studies of the wind fields and regional modeling of the equatorial Indian Ocean region. The project is conducted by the University of Notre Dame. Sponsored by the Office of Naval Research.



### Climate Information for Mahaweli Water Resources Management (2000-4, 2008-to date)

We developed tools to generate climate information for water resources management. FECT was providing weekly hydro-meteorological advisories to the Mahaweli Authority (MASL) since 2008. Sponsor: IRI, Mahaweli Authority, IFS (Sweden).



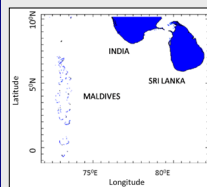
## Completed Projects

### South Asia Strategy Development for CCAFS and Toolkit for crop yield forecasting (2010–15)

We contributed to the South Asian Strategy Development CCAFS and assisted the Sri Lanka Department of Agriculture to develop a proposal for crop yield forecasting. Sponsored by CGIAR Climate Change, Agriculture and Food Security Program (CCAFS).



### Intra-Seasonal Climate Predictions for Sri Lanka and Maldives for water resources management (2012-15)



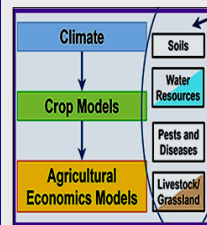
We diagnosed the variability of climate over Sri Lanka from a few days to a month while providing a weekly climate bulletin to National Water Managers. As pilot studies, we diagnosed causes of flooding in the Pinga-Oya catchment of the Mahaweli River in Sri Lanka and drought in the Greater Male region of the Maldives. We worked on climate diagnosis and evaluated the use of Intra-Seasonal and Seasonal Predictions. Sponsored by the US National Academy of Sciences, USAID .

### Masters in Development Practice, University of Peradeniya (2010-16)

FECT assisted the University of Peradeniya to develop a post-graduate course focusing on sustainable development. We support curriculum development, teaching, research and field placements for Interns. We undertook research and training at the Maldives National University. Sponsored by the MacArthur Foundation, USA.



### Modeling the impacts of climate change on rice agricultural systems and Food Security in Sri Lanka (2012–14)



We undertook climate change, crop and economic modeling of the impacts of climate change on agricultural systems working across Sri Lanka with a focus on the Kurunegala District. This work was in partnership with the Universities of Peradeniya, Ruhuna and Rajarata, Department of Agriculture and Sugarcane Research Institute. Sponsored by the Agriculture Model Inter-comparison and Improvement Program (AgMIP).

### Dengue Risk and its relationship to Climate in Sri Lanka (2010-11)

We assessed the regional and seasonal variation of dengue risk in Sri Lanka and its relationship to climate. The findings were followed up to development of a proposal. Sponsored by WHO - SEARO.



### Climate Variability and Rice Production (2000, 2010)



We investigated the impacts of El Nino Southern Oscillation (ENSO) events on rice production, area and yield by district in Sri Lanka. Sponsor: SEARCA—FAO

### Climate Change Impacts on Seasonally and Intermittently Open Tidal Inlets (2009)

We collaborated in characterizing the seasonal and regional variation of stream flow under climate change forcing for Sri Lanka from global climate change. Sponsored by UNESCO - IHE.



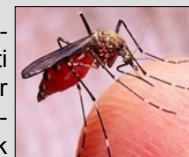
### Assessing drought and enabling adaptation through rain-water harvesting (2007-08)



The project undertook scarcity assessments and climate analysis to support Rain Water Harvesting policy, design and operations in Hangu-ranketa. Sponsored by the Provention Consortium.

### Climate Impacts on Malaria Transmission and Malaria Risk Mapping for Sri Lanka (2003–08)

Working with the International Research Institute for Climate and Society (IRI), the Anti Malaria Campaign, and International Water Management Institute (IWMI) we characterized the climate relationships to malaria risk at sub-district scales. Funded by NOAA, Office of Global Programs.



### Climate and Natural Disaster Risk (2002–05)



The project was to identify the risks posed by multiple natural hazards such as droughts, floods, landslides and cyclones in Sri Lanka. Sponsored by the World Bank through the Earth Institute.

### Impacts of Climate Change on Tea and Coconut Plantations and Adaptation (2002–05)

With TRI and CRI, the project characterized climate change and assessed its impacts on tea & coconut plantations. The project involved IRI, Department of Meteorology, Coconut Research Institute and Tea Research Institute. Sponsored by the System for Analysis, Research and Training & Sri Lanka Association for Advancement of Science.



### Climate and Human-Elephant Conflict (2001–04)



The influence on the seasonal and decadal variation of climate on human elephant conflict was identified by the project. This was assisted by Environment, Forestry and Conservation Division of the Mahaweli Authority and the Department of Wildlife Conservation, Sponsored by IRI and the Earth Institute.